

**WASTE TREATMENT PLANT PROJECT (WTP)
REQUEST FOR INTEREST (RFI)**

High Level Waste Facility HVAC Duct System

Requisition Number: 24590-QL-SRA-MDHM-00010
Submit Interest By: Friday, March 13, 2026
Quality Level: QL (NQA-1-2022); Parts 1&2, Subparts 2.2 and 2.7
Award Type: Firm Fixed Price / Fixed Unit Price

ESTIMATED SCHEDULE:

Issue Request for Proposal: 2nd Quarter CY2026
Award and Notice to Proceed: 4th Quarter of CY2026

PROJECT DESCRIPTION AND LOCATION:

The Hanford Tank Waste Treatment and Immobilization Plant (WTP) is a complex of radioactive waste treatment processing facilities designed and constructed by Bechtel National, Inc. for the Department of Energy (DOE).

SCOPE OF WORK:

INTERESTED PARTIES SHALL HAVE AN EXISTING QUALITY PROGRAM MEETING THE REQUIREMENTS OF ASME NQA-1, 2022 OR CONFIRM ESTABLISHING AN ASME NQA-1 QUALITY PROGRAM.

This Scope of Work is specific to the High-Level Waste (HLW) facility (see attached pictorial illustration) consisting of approximately 175,000 lbs. of welded stainless-steel ductwork, AG-1, ranging in size up to 60" in diameter.

SUBCONTRACTOR's work shall include, but shall not be limited to, design review of CONTRACTOR installed duct systems, design, procurement, fabrication and installation of all ductwork materials, supports, hangers, expansion joints for thermal expansion and/or stress reduction, inline components, the seismic qualification of those items and components to furnish, install, and test the HVAC ductwork systems and inline components in the HLW facility, testing, technical support services, transportation, documentation and other work necessary. Performance of this Scope of Work will be executed in parts consisting of:

Design:

Design review of CONTRACTOR previously installed duct system for compliance with current design criteria and specifications.

Full and complete design resulting in issuance of Issued for Fabrication (IFF) document package for the procurement and fabrication of structural supports, ductwork, inline components and miscellaneous ductwork accessories associated with described installation work scopes/packages.

Procurement & Fabrication: Procurement of all duct material and in-line components such as dampers, grills, etc., and Off-Site fabrication of duct work and transportation to the jobsite.

Installation: SUBCONTRACTOR shall construct the HVAC System in accordance with the CONTRACTOR approved design, and SUBCONTRACTOR approved Issue for Installation (IFI) drawings/work Package.

QUALITY ASSURANCE (QA) REQUIREMENTS:

Programmatic Quality Assurance (QA) requirements for subcontracts or purchase orders performed in the WTP Jobsite will be:

Nuclear Level Quality- Based on ASME NQA-1 2022.

COMMERCIAL GRADE DEDICATION:

The CONTRACTOR will review the SUBCONTRACTOR'S program for dedication of commercial grade items and services, including sub-supplier dedication activities should the SUBCONTRACTOR choose to dedicate commercial grade items.

BIDDER REGISTRATION AND PRE-QUALIFICATION:

The BNI Acquisition Services Subcontracts/Purchasing group is responsible for collection, evaluation, and internal publication of potential Bidders' information for the purpose of pre-qualifying to bid on any particular subcontract or purchase order.

As part of this process, BNI requires all potential Bidders to register at the Supplier and Contractor Portal at: <https://www.Bechtel.com/supplier/>

If your Bidder has registered previously, then only supplemental information should be sent to the Bechtel National, Inc. representative noted below.

Information to be provided by potential Bidders must include:

- Dun and Bradstreet Number
- Company Name
- Company Address
- Contact Phone Number
- Contact Person
- Email Address
- Safety Data and Information
- Applicable Work Experience and Projects
- Size of Business (Small, Large)

WTP BACKGROUND:

Information about the WTP Project can be found on <http://www.hanfordvitplant.com>

RFI CONTACT:

Bechtel National, Inc.

450 Hills Street

Richland, WA 99354

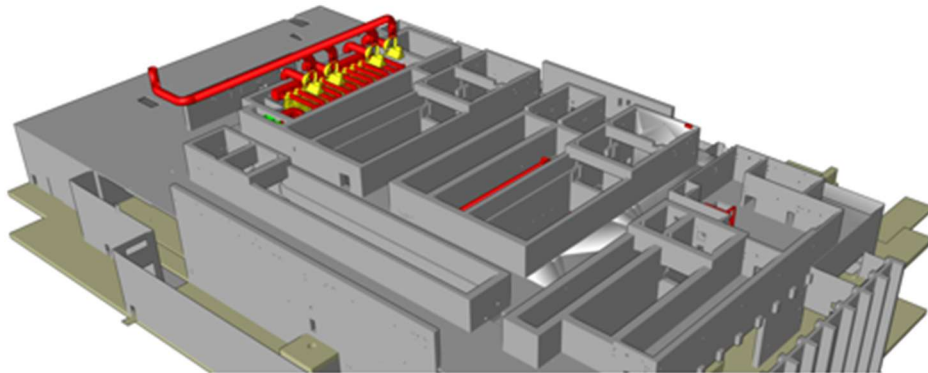
Attn: Matthew Jackson

Phone: (509) 371-5997

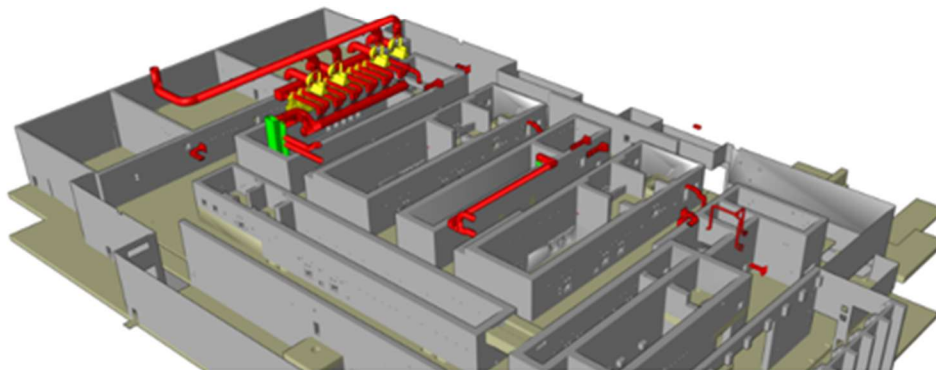
Email Address: mjjackso@bechtel.us

Mailstop: MS10-E

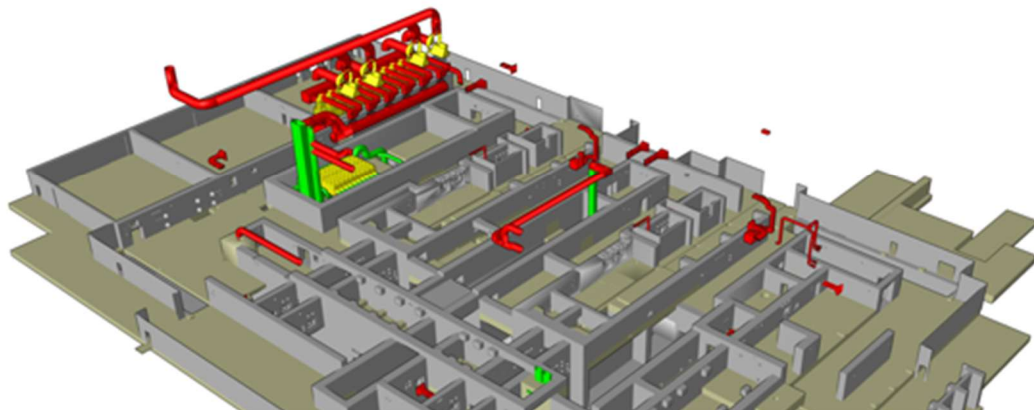
**HLW Pictorial Illustration of HVAC Ductwork by Elevation Cut
(Red To-Go, Green Installed, Yellow Equipment)**



Elevation 58' HLW



Elevation 37' HLW



Elevation 0' HLW